

GB-KALEE *Everything for the Cinema & Theatre*

PROJECTION ROOM EQUIPMENT

The new GAUMONT-KALEE *clutch type* REWINDER



PRICE COMPLETE

£8 . 17 . 6

The new Gaumont-Kalee clutch type rewriter, illustrated above, is of robust construction built to withstand hard and continuous service. It is attractively finished in mid-stone enamel and chromium plate.

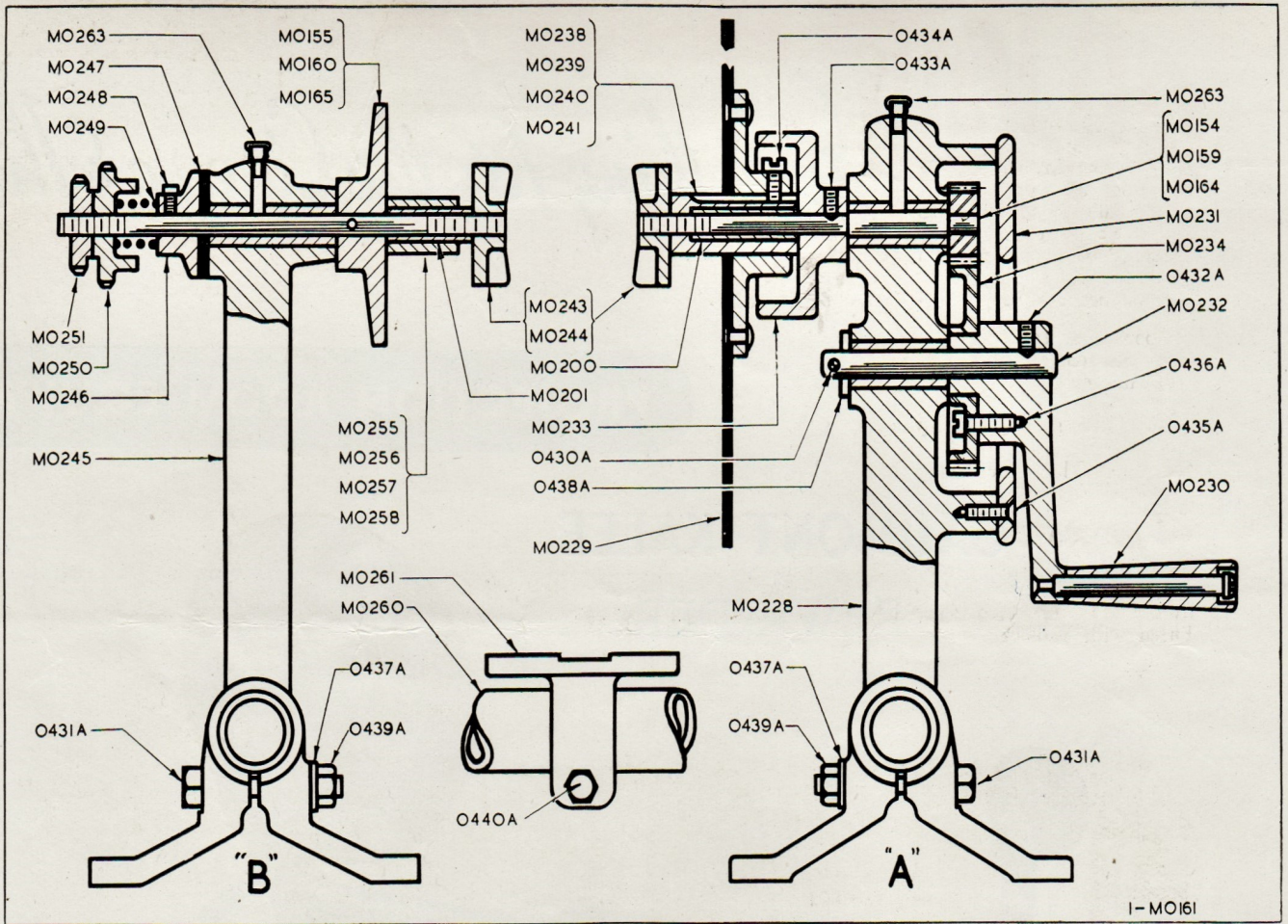
The standards are made of cast-iron, accurately machined and coupled by a strong tube 39" long.

A cast-iron block, machined out to film width, is supplied fixed to the tube, to provide a simple fixture for scraping and jointing the film.

The geared winding head is provided with a 14½" diameter pressed aluminium disc for loose film winding, and is driven through suitably enclosed machine cut gears giving a 3 to 1 ratio. The fixed head is fitted with a clutch on the revolving spindle and can be adjusted to control the speed of spool.

The Gaumont-Kalee rewinders can be supplied to accommodate spools with centre hole diameters of 5/16", 3/8", 1/2", and 9mm.

Please state size or make of projector when ordering.



The
**GAUMONT
-KALEE
REWINDER**

Spare Parts Prices

	5/16" dia. Spindle	9mm. dia. Spindle	3/8" dia. Spindle	1/2" dia. Spindle
CATALOGUE CODE No. and PRICE				
Complete Rewinder	MO 151 £8. 17. 6	MO 156 £8. 17. 6	MO 161 £8. 17. 6	MO 166 £8. 17. 6
Winding Head. "A"	MO 152 £6. 13. 2	MO 157 £6. 13. 2	MO 162 £6. 13. 2	MO 167 £6. 13. 2
Fixed Head. "B"	MO 153 £2. 4. 4	MO 158 £2. 4. 4	MO 163 £2. 4. 4	MO 168 £2. 4. 4

WINDING HEAD DETAILS - 'A'

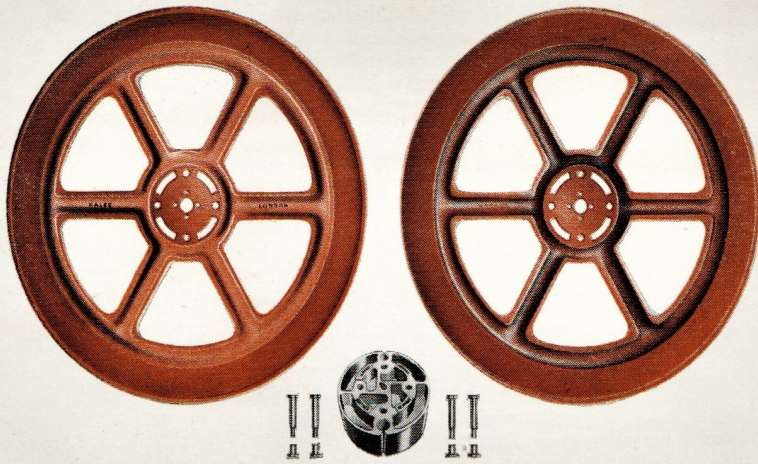
	£	s.	d.
MO154 5/16" Spindle & Pinion Complete	1	10	6
MO159 9mm. " " " " " "	1	6	0
MO164 3/8" & 1/2" " " " " " "	1	2	1
MO200 Bush, short, 1/2" Spindle only	2	0	0
MO228 Body, Winding Head	3	6	4
MO229 Flange, Complete with Boss	1	5	0
MO230 Handle, Complete	18	11	
MO231 Cover, Body, Winding Head	3	4	
MO232 Spindle, Gear	3	11	
MO233 Cup, Spindle	10	5	
MO234 Gear, Driving	16	4	
MO238 Bush, long, 5/16" Spool	5	11	
MO239 Bush, " 9mm. " " " " " "	5	11	
MO240 Bush, " 3/8" " " " " " "	5	11	
MO241 Bush, " 1/2" " " " " " "	5	11	
MO243 Wingnut, 5/16" Spindle	3	4	
MO244 Wingnut, 9mm., 3/8" & 1/2" Sp'dls	3	4	
MO263 Lubricator	1	5	
O430A Pin, Split	5		
O431A Screw fixing MO228	9		
O432A " " MO232	7		
O433A " " MO233	7		
O434A " " MO229	1	2	
O435A " " MO231	5		
O436A " " MO230	5		
O437A Washer " MO228	5		
O438A " " MO232	7		
O439A Nut " MO228	7		

FIXED HEAD DETAILS - 'B'

	£	s.	d.
MO155 5/16" Spindle & Flange Complete	1	0	3
MO160 9mm. " " " " " "	1	3	0
MO165 3/8" & 1/2" " " " " " "	19	6	
MO201 Sleeve, 1/2" Spindle	2	0	
MO243 Wingnut, 5/16" Spindle	3	4	
MO244 Wingnut, 9mm., 3/8" & 1/2" Sp'dle	3	4	
MO245 Body, Fixed Head	1	12	11
MO246 Plate, Clutch	5	6	
MO247 Packing, Clutch			2
MO248 Screw, Clutch	2	0	
MO249 Spring, Clutch	1	5	
MO250 Nut, Tension	2	9	
MO251 Locknut	1	9	
MO255 Sleeve, 5/16" Spindle	2	2	
MO256 " 9mm. " " " " " "	2	2	
MO257 " 3/8" " " " " " "	2	2	
MO258 " 1/2" " " " " " "	2	4	
MO263 Lubricator	1	5	
O431A Screw fixing MO245	7		
O437A Washer fixing MO245	2		
O439A Nut fixing MO245	5		

COMPLETE REWINDER DETAILS

MO260 Tube, Stay	1	4	7
MO261 Table, Jointing	1	6	0
O440A Screw, fixing MO261			7



The new

GAUMONT-KALEE FILM SPOOL

with
Detachable Cheeks
Aluminium or Steel

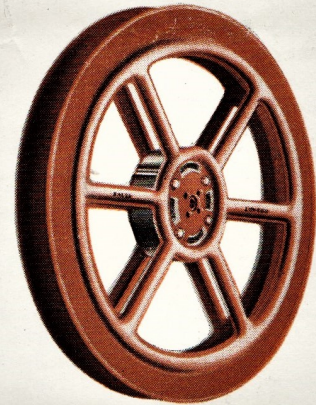
Saves time and money and
increases Projection Room efficiency.
Available for all makes of projectors.

NOTE THESE EXCLUSIVE ADVANTAGES

Cheeks and hub can quickly and easily be detached by unscrewing four brass bolts. Should any part become damaged, the operator can effect an immediate replacement. There is no need to reject the whole spool or buy a new one. Every Gaumont-Kalee spool is made to high precision standards and is guaranteed mechanically true.

The 14 $\frac{5}{8}$ " diameter cheeks are made of aluminium or steel, finished in mid-stone enamel, and the 4 $\frac{1}{5}$ " hub is the latest moulded type, with brass bush. The strong yet extremely light weight of the Gaumont-Kalee spool means longer life, less wear and strain on spindles and take-up gear, therefore less frequent replacement of those parts, as well as in the Rewinder.

The new Gaumont-Kalee spools are available for all makes of projectors and sound systems.



PRICE
21/-
EACH

Replacement Parts :

14 $\frac{5}{8}$ " cheeks 13/9d. per pair : 4 $\frac{1}{5}$ " diameter special moulded hub with bush 5/9d. each : bolts and nipples 5/3d. set of four.

NOTE :— If desired, spools supplied with *fixed* cheeks (aluminium or steel) at 19/6d. each.

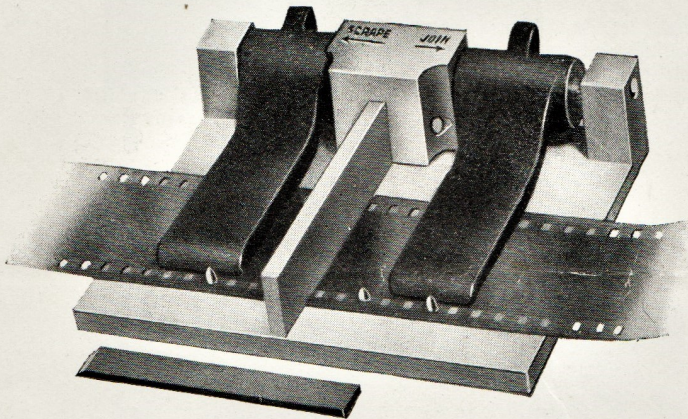
FILM JOINER

The Junior Model illustrated is efficient in operation and will ensure accurate joins. It consists of a steel base with guide pins accurately spaced to ensure perfect alignment of the broken film. The machined steel bar has a lateral movement equal to the width of a full sprocket hole join, and permits accurate cutting and cleaning of the film, with the scoring and scraping tool provided.

PRICE £2 . 12 . 6 Available for 16mm. or 35mm. film

De LUXE Model. Two models available for 35 mm. film : one for negative stock giving a 1/16" join, and the other for positive giving full sprocket hole join. 16 mm. model also available.

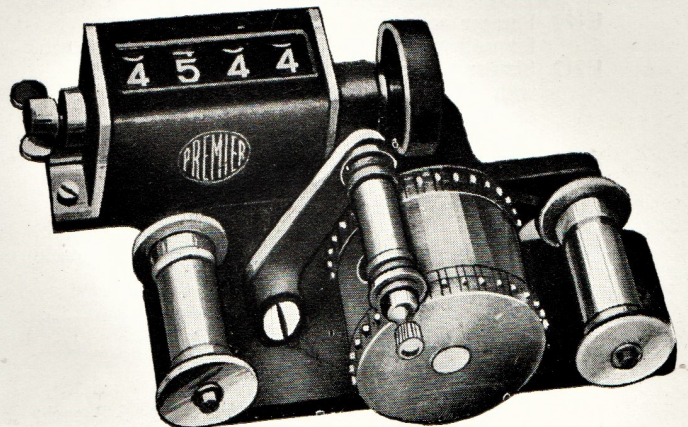
PRICE 35 mm. £10 . 0 . 0 16 mm. £6 . 6 . 0



FILM MEASURER

A substantially constructed and trouble-free measurer. It consists of an eight picture sprocket with guide rollers for ensuring perfect alignment of the film. A "Veeder" counter is fitted, reading up to 10,000 feet, which can be set to zero by the thumbscrew at the side. It can be supplied for use with either a vertical or horizontal rewinder.

PRICE £11 . 0 . 0



The GAUMONT-KALEE

"VULCAN" Lantern Slide Projectors

Specially designed for attaching to the side of the Gaumont-Kalee "Vulcan" Lamphouse. It is essential where it is required to show slides, but where there is no space in the projection room for the standard slide lantern. Of robust design and fitted with a triple vertical slide carrier and light cut-off. The arc lamp is the "SL" scissors type, strong and capable of hard continuous service.

PRICE £35. 0. 0.

GAUMONT-KALEE "BLOOMED" PORTS

The perfect porthole glass for the modern Lens.

Another contribution by Gaumont-Kalee towards perfect picture presentation. One of the greatest advancements in optical design is the Gaumont-Kalee colour-corrected "Bloomed" Lens, and now this technique has been applied to porthole glasses.

IMPROVED LIGHT — NO DISTORTION

Not exceeding 8" square 39/- each
Over 8" and not exceeding 10" square 52/- each

SLIDE LANTERNS

BI-UNIAL LANTERN on PEDESTAL STAND

LAMPHOUSE: Made of stout gauge sheet steel, finished crystalline black enamel. Light-tight doors are fitted with brass eyepieces. Asbestos curtain at rear.

ARC LAMPS: Standard 50 amp type as shown.

STAGE and FRONT TUBE: Made of brass bolted to the lantern front. Slide carriers are built in the stage, accurately machined to take the slide holder. The slide carrier can be adjusted perfectly square on the screen.

LENSES: 2" Diameter, any focus up to 26".

LENS MOUNTS: Rack and Pinion.

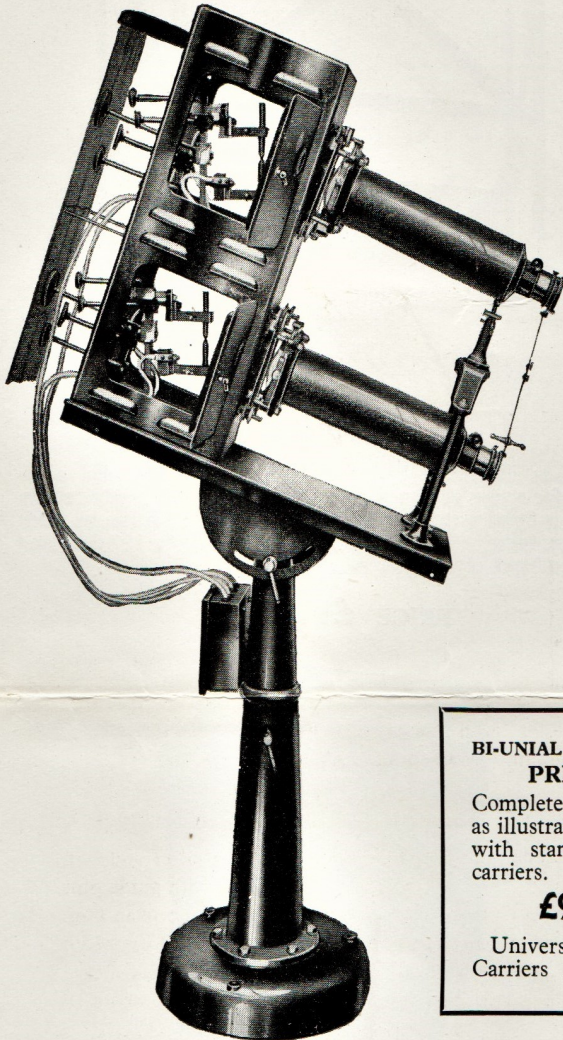
CONDENSERS: 4½" Plano for standard slide carrier, 5" plano for universal

SLIDE CARRIERS: All metal to take 3¼" x 3¼" English size slides, or Universal to take English and 4" x 3¼" American slides.

IRIS DIAPHRAGM DISSOLVERS: Fitted in front of lens mounts with pivoted arm to enable a gradual and effective dissolving of one picture into the other.

STAND: Heavily built of cast-iron and consists of base column and rotating pillar. The stand top to which the lantern is bolted can be pivoted and clamped to the desired angle of throw.

TERMINAL BLOCK: Totally enclosed pattern, conforming to the regulations.



BI-UNIAL LANTERN PRICE

Complete on Stand
as illustrated on left
with standard size
carriers.

£90

Universal Slide
Carriers £5 extra

DE LUXE MODEL on PEDESTAL STAND

LAMPHOUSE: Constructed of stout gauge sheet steel finished crystalline black enamel with asbestos curtain at rear. Two light-tight side doors are fitted with fibre handles and large brass eyepieces, enabling the lantern to be operated from either side.

ARC LAMP: Standard type as illustrated—35 amp or 50 amp.

STAGE and FRONT TUBE: Made of brass, bolted to the lantern front. Slide carriers are built in the stage. The front plate is of cast aluminium, accurately machined to take the slide holder. Provision is made for adjusting the slide perfectly square on the screen.

LENS: 2" Diameter cylinder lens, any focus up to 26".

LENS MOUNT: Rack and pinion with hinged shutter.

CONDENSER: 4½" Plano for standard slide carrier, 5" Plano for Universal.

SLIDE CARRIER: All metal to take 3¼" x 3¼" English size slides, or Universal to take English and 4" x 3¼" American slides.

STAND: Heavily built of cast-iron and consists of base column and rotating pillar. The stand top, to which the lantern is bolted, is of heavy gauge sheet metal. It is pivoted, and can be clamped to the desired angle of throw. The stand is finished crystalline black enamel.

TERMINAL BLOCK: Totally enclosed pattern, conforming to the regulations.

PRICE COMPLETE ON STAND (as illustrated on right)

No. 8 Model with 35 amp Arc Lamp & standard Slide Carrier £40
No. 9 Model with 50 amp Arc Lamp & standard Slide Carrier £45
£2. 10. 0. extra for Universal Slide Carrier



STANDARD MODEL

on Wrought Iron Stand

Specification as the de luxe model, but on wrought iron stand, enamelled bright black. Fitted with slotted stays permitting the setting of lantern to any desired angle.

PRICE

With 35 amp Arc Lamp and standard Slide carrier £30

With 50 amp Arc Lamp and standard Slide carrier £35

Universal Slide Carrier
£2. 10. 0. extra

The GAUMONT-KALEE film STORAGE CABINET

The cabinet is made of stout gauge steel, and is divided into twelve separate compartments, each fitted with a self closing sprung door, to conform with the regulations. The compartments will accommodate any size spool up to 15" diameter. The stand is substantially made of wrought iron.

The cabinet and stand are available finished in the standard Gaumont-Kalee mid-stone enamel, with maroon door knobs; or if desired, can be supplied in black crystalline enamel. The cabinet may be purchased separately, if required.

12 Spool Cabinet only, finished mid-stone enamel or black crystalline enamel.

£9.0.0 with stand £12.0.0

Door springs for above cabinets 6/0d. per dozen.

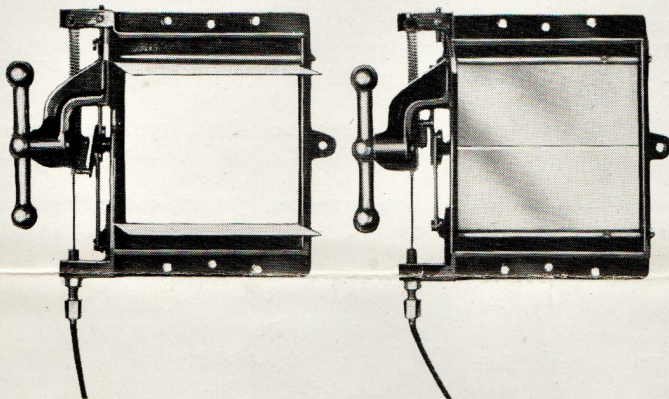
NOTE :— The space within the Stand is designed to take an additional Cabinet.

FILM STORAGE BIN

For outside use, made of stout gauge galvanised iron. Size 30½" x 20" x 15½", will accommodate twenty 15" diameter film tins or spools. Fitted with padlock.

£5.5.0

"EASIFIT" CHANGEVER DEVICE



A simple and trouble-free mechanism to obtain the perfect change-over. It consists of two frames fitted with shutters, which are linked by Bowden cable. Finger touch of the control knob on either frame instantaneously closes one shutter and opens the other. Easily fitted to any make or type of projector.

PRICE £10.10.0 PER PAIR



Larger model for film renting and processing companies, strongly constructed of 24 SWG galvanised iron, 18" x 18" x 24" high.

PRICE £3.0.0

TOOL and SPARES CABINET

The cabinet illustrated is designed to hold the tools and spares used in the projection room.

It is substantially constructed of stout gauge sheet steel and all joints and partitions are welded. The panelled door is fitted with a good quality lever lock with two keys. The exterior is finished black crystalline enamel and interior in matt black. Overall size : 24" high, 16" wide, 12" deep.

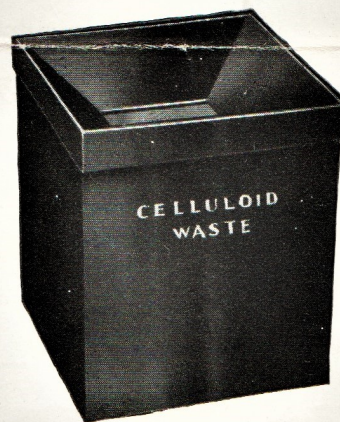
PRICE £6.2.3



FILM WASTE BIN

The bin as illustrated below, fulfils the regulations that a receptacle for scraps of film must be provided in the rewind room. The top is fitted with a spring controlled flap and it can be taken off for emptying. The bin measures 11" x 11" x 12" deep and is finished black crystalline enamel.

PRICE £1.12.6



*You can rely upon
all these accessories*

CARBON SAVERS

With the present high carbon costs, these economisers are more than ever essential. They are robustly made and will give long service. Fit Gaumont-Kalee Savers and use carbons to the last inch Price each 9/0

CARBON TRAYS

For fixing to wall of operating box. Three compartments, one 24" long, two 12". Ensures dryness of carbons required for the day. each 18/6

CINEMA BLACK

The perfect coating for Announcement Slides
2-oz Bottles each 1/6

FILM CEMENT

The label of a quality product used in over 3000 Cinemas.

4-oz Bottles each 3/0
1 pt. Bottles each 12/0

Non-Flam Film Cement

4-oz Bottles each 3/0
1 pt. Bottles each 12/0

'DUFAYCOLOUR' Film Cement

1-oz Bottles each 1/6



FILM CLEANING FLUID "THAWPIT"

G.B.-Kalee are sole concessionaires in the Cinematograph Trade for this well-known cleaning fluid. In addition to cleaning films it is perfect for removing dirt and grease from Cine apparatus and furnishings, etc. 1 gall, each £1. 0. 3

FILM SPACING

Black Masking per foot 3d.
White Opaque per foot 2d.

FILM WAXER

Film economically and speedily waxed whilst rewinding. Majority of accidents to films during projection eliminated. Reduction of wear and friction means longer life to projector and replaceable parts. **Price:** Complete with one box of wax £7. 17. 6.
Wax Refills: BOX containing 12 slabs each 2. 9.

FIRE BLANKETS—ASBESTOS

Made to meet all regulations. Can be supplied in special metal container enabling rapid and immediate action.

6'-0" x 6'-0" in Metal Container	£3. 8. 0
6'-0" x 6'-0" without	£2. 8. 0
4'-6" x 6'-0" in Metal	£3. 0. 6
4'-6" x 6'-0" without	£2. 0. 6

FIRE EXTINGUISHERS

We can supply all makes and types of Fire Extinguishers. Listed below is a selection of the well known "Valor" range suitable for use in the Cinema and Theatre.

				Charges
E122	Plunger soda acid pattern for ordinary fire risks. 2 gall.	£3. 10. 0	5/0	each
E212	Similar to above but fitted with length of hose for directing the solution.			
	Steel 1 gall.	£3. 15. 0	4/6	each
E222	Steel. As E212 but 2 gall.	£4. 0. 0	5/0	each
E310	Reversible soda acid pattern for ordinary fire risks.			
	Steel. 1 gall.	£3. 15. 0	4/6	each
E320	Steel. As E310 but 2 gall.	£4. 0. 0	5/0	each
EW902R	Pump CTC pattern for motor and electrical fires.			
	Brass	£3. 5. 0	8/0	each
	Chromium plated	£3. 17. 0	8/0	each
E610	Foam pattern suitable for Petrol, Benzol and Oil Fires			
	1 gall.	£3. 15. 0	5/0	each
E620	As above but 2 gall.	£4. 5. 0	7/0	each

FIRST AID CABINETS. Complying with the Factories Act 1938.



Type A.1. Strong metal cabinet 11½" x 5½" x 5". Divisions fitted with dressings for wounds and burns, bandages, lint, cotton wool, adhesive plaster, eyedrops, iodine, sal-volatile, etc.

Price complete £1. 11. 0

MOVIETONE INK

BLACK for soundtrack joins per bottle 3/0
WHITE for changeover cues per bottle 3/0

OIL CANS

Enots "Easiject" Oiler No. 30A, ½ pint. Improved pump design, all steel container. Guaranteed for ever. Price each 11/6

OPERATORS STOOLS

"Tan-sad" Model 2534F. Vulcanised Fibre seat and back, 24" high with adjustment of 6" to maximum of 30". Standard finish, stove enamelled grey or black each £3. 1. 0
"Tan-sad" Silver King Model. Vulcanised Fibre seat and back, standard finish stove enamelled grey. Available in the following fixed seat heights.
18", 20", 22", 24", 26", each £1. 18. 0
28", 30", each £2. 0. 0

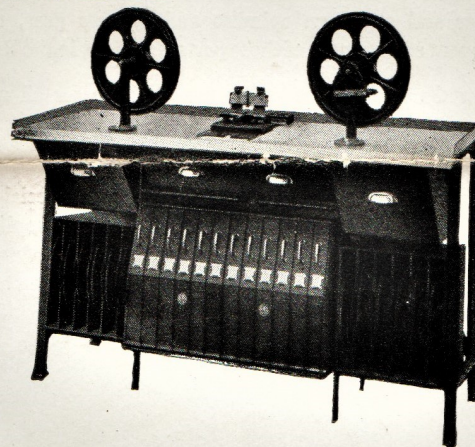
RECORD CABINETS

Constructed of stout gauge sheet steel on an angle iron frame and legs. Finished black crystalline enamel. Partitioned into compartments to enable easy handling of records. Storage for approximately 50 records. £7. 11. 8

REFLECTO

For rejuvenating old pitted mirrors. A small quantity rubbed over the surface, polishes the particles embedded in the glass per bottle 3/2

REWIND BENCH



Price £75 complete

An all-in "Premier" unit comprising an all-metal bench fitted with rewriter, film joiner, film waxer, scrap film bin, 12-way patent spool cabinet with interlocking compartments; two 6-way open cabinets to take spare spools; ample drawer space for tools and spares, and compartments for film cement, paint bottles, etc. The whole unit occupies a space of 6ft. x 2ft.

SLIDES

Black Slides
Box containing 12 3/0

Black's "Projecta" Slides
Type your own announcements
Box containing 72 16/0

King Slides each 4/6

Slide Binding Strips
Ready Gummed box 1/6

Slide Ink—Black
2-oz. bottles each 1/6

Slide Colouring Inks
Wide range of colours each 2/3

SLIDE BOXES.

Made of steel to hold 50 slides each £1. 17. 6

SPROCKET CLEANING BRUSH each 2/9

STOCKINETTE CLEANING CLOTH per roll 17/7